

# THE NUMBER LINE

September 2011

[www.lamath.org](http://www.lamath.org)



LOUISIANA ASSOCIATION of  
TEACHERS of MATHEMATICS

## Table of Contents

<a href="#">President's Message</a>	2
<a href="#">2011 LATM Conference</a>	3-4
<a href="#">Teacher Recognitions</a>	5-6
<a href="#">Student Recognitions</a>	6
<a href="#">Vice-Presidents' Circle</a>	7-9
<a href="#">Affiliate News</a>	10-13
<a href="#">2011 NCTM Affiliate Conference</a>	13
<a href="#">LATM Journal</a>	14
<a href="#">Election of Officers</a>	14
<a href="#">Mathematical Puzzles</a>	15
<a href="#">North Louisiana Math Teachers Circle</a>	15
<a href="#">NCTM Update</a>	16
<a href="#">Opportunities for Teachers</a>	17-18
<a href="#">Teachers' Technology Corner</a>	18
<a href="#">Louisiana Department of Education Update</a>	19
<a href="#">Executive Council Member Contact List</a>	21
<a href="#">Membership Renewal</a>	21

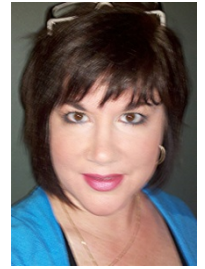


Look for this icon on articles which spotlight members of our Executive Council who work tirelessly as volunteers on behalf of the organization.

Hyperlinks in the Table of Contents may be used to quickly access specific articles.

## PRESIDENT'S MESSAGE

As another exciting school year begins, we as educators are always searching for ways to improve and enhance our classrooms. Join us in Monroe, where we will be "**Learning, Applying, and Teaching Mathematics**" at the 2011 LATM Conference on October 19-21, 2011. Over 175 professional development sessions will provide numerous opportunities to network with other mathematics educators from throughout the state. Visit <http://www.lamath.org> for registration and hotel information. Discounts are available for early registration. Save \$15 by postmarking your registration payment by September 16, 2011.




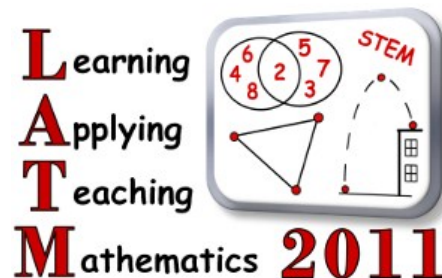
Our LATM Outstanding Teacher finalists and winners and the mathematics 2011 finalists and 2010 awardee for the Presidential Award for Excellence in Mathematics and Science Teaching (PAEMST) will be honored at the LATM Awards Luncheon on Thursday, October 20. Please plan to join us. The cost is \$10 and tickets can be purchased with your registration.

Volunteers are always welcome. One of the easiest ways to volunteer is by serving as a session presider. Presiders are needed for each regular session of the conference to protect the integrity of the CLU program. This is a great opportunity to support your organization. Since sessions fill up quickly, presiders have the advantage of being guaranteed a seat at the session in which that person is presiding. If you are willing to serve as a presider, please indicate this on the presider line on the registration form and/or contact Kay Kussman at [kkussman@mcneese.edu](mailto:kkussman@mcneese.edu). Presiders will be contacted in early October for assignments.

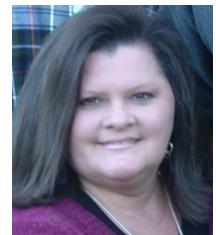
September 16, 2011 is also the deadline for submission to Quality Science & Mathematics Grant Program (QSM). This \$750 grant application is simple to complete and the funds can greatly enhance any mathematics or science classroom. More information can be found in the Teacher Opportunities section of this newsletter.

Please share these wonderful opportunities with your colleagues and I look forward to seeing you in Monroe!

  
Beth Smith  
LATM President  
[bethsmith1124@gmail.com](mailto:bethsmith1124@gmail.com)



**Stacey Magee** has served as the Secondary Mathematics Curriculum Specialist for St. Tammany Parish Schools for the past three years. Prior to this, she taught math at Mandeville High School for 16 years and Glen Oaks High School for one year. She serves as Secretary for both LATM and the Louisiana Council of Supervisors of Mathematics (LCSM) and is the NCTM Representative for SEATM. She enjoys the opportunity to help teachers in her district with professional development and strategies to strengthen classroom teaching and promote student engagement and learning.

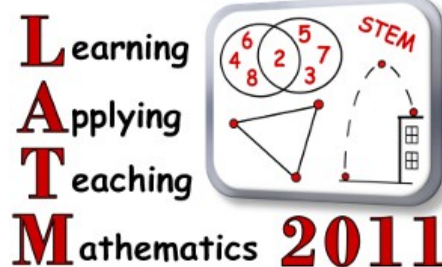


[Return to Table of Contents](#)

# 2011 LATM Conference

**Make Plans to Join Us!**

**2011 LATM Conference**  
**October 19-21, 2011**  
**Monroe Civic and Convention Center**  
**Monroe, LA**

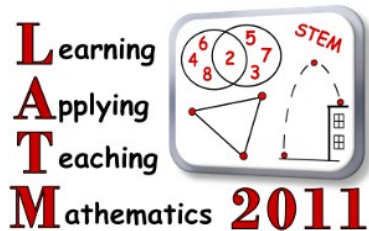


Registration and hotel information along with other conference details are available on the LATM website at <http://lamath.org/conference2011/index.htm>. Registration forms are completed online and fees are based on postmark dates of payments as indicated below. Registrations are not final until payment is received.

## Conference Registration Rates

<b>Full Conference Pre-Registration</b> (Save \$15 when compared to Full Conference Registration. (Payment postmark of September 3 thru September 16, 2011.))	\$60.00
<b>Full Conference Registration</b> (Payment postmarked after September 16, 2011.)	\$75.00
<b>Full-time Non-teaching STUDENT Full Conference Pre-Registration</b> (Payment postmark by September 16, 2011.)	\$25.00
<b>Full-time Non-teaching STUDENT Full Conference Registration</b> (Payment postmarked after September 16, 2011.)	\$30.00
<b>Friday Only Pre-Registration</b> (Payment postmarked by September 16, 2011.)	\$25.00
<b>Friday Only Registration</b> (Payment postmarked after September 16, 2011.)	\$35.00
<b>LATM Awards Luncheon – Thursday, Oct. 20</b> (No other sessions will be held during the luncheon and no other food services are located at or near the conference site.)	\$10.00

[Return to Table of Contents](#)



## Conference Overview

Wednesday, Oct. 19, 2011	<p>Extended Sessions: 8:30 a.m. – 4:00 p.m.            Exhibitor Registration and Set-up: noon – 4:30 p.m.            LCSM Meeting: 1:00 p.m. – 4:00 p.m.            Conference Participant Check In: 5:00 p.m. – 7:30 p.m.            Exhibits Showcase: 5:00 p.m. – 8:00 p.m.            Exhibits Reception: 6:00 p.m. – 8:00 p.m.</p>
Thursday, Oct. 20, 2011	<p>Conference begins            Conference Participant Registration: 7:00 a.m. – 4:00 p.m.            Exhibit Hall Open: 8:00 a.m. – 4:30 p.m.            Concurrent Sessions: 8:00 a.m. – 4:30 p.m.            LATM Awards Banquet: 12:00 p.m. – 1:30 p.m. Tickets are \$10.00.</p>
Friday, Oct. 21, 2011	<p>Conference continues            Conference Participant Registration: 7:00 a.m.            Exhibit Hall Open: 8:00 a.m. – 12:00 p.m.            Concurrent Sessions: 8:00 a.m. – 12:30 p.m.</p>

## Learning, Teaching, and Applying Mathematics 2011 Conference Supporters

The Conference Committee expresses a special thanks to our Exhibitors who have already committed to join us in Monroe on October 19-21, 2011.

**AMSCO**  
**APEL**  
**AXI**  
**Best Quest**  
**Brainchild**  
**CHARISM**  
**Curriculum Associates**  
**Educators Outlet**  
**ETA**  
**First in Math**  
**Glencoe/McGraw Hill**  
**Holmes Education**  
**Consultants**

**Houghton Specialized**  
**Group**  
**Houghton/Harcourt**  
**Louisiana Virtual School**  
**Lakeshore**  
**Pearson**  
**Reliant Education**  
**Renaissance Learning**  
**Scholastic**  
**Specialty School Math**  
**Texas Instruments**  
**Voyager**

[Return to Table of Contents](#)

# Teacher Recognitions



## Presidential Awardees and Finalists



The 2010 Louisiana Presidential Awardees for Excellence in Mathematics and Science Teaching, **Paige Falcon** (mathematics) from Terrytown Elementary in Jefferson Parish and **Michelle Morvant** (science) from Thibodeaux Elementary in Lafourche Parish, enjoyed a week of celebration Washington, DC. Michelle (*left*) and Paige (*right*) were also honored in July during the Louisiana Department of Education's Annual Cecil Picard Educator Excellence Symposium in Baton Rouge. Both Paige and Michelle are LATM members.



The state 2011 mathematics finalists for the Presidential Award for Excellence in Mathematics and Science Teaching are **Marcia "Lynn" Denison**, a teacher in Calcasieu Parish at J.I. Watson Middle School, and **Alison Drake** and **Scarlet Feinberg**, both teachers at the KIPP Believe Charter School in New Orleans.

The annual state recognition luncheon will be held at the Governor's Mansion on Thursday, September 22<sup>nd</sup>. The mathematics and science awardees and finalists will be joined by school administrators and family members during the luncheon. LATM will recognize the mathematics awardee and state finalists during the Awards Luncheon in Monroe on October 20<sup>th</sup>.

Nominations for the 2012 Presidential Awards for Excellence in Mathematics and Science Teaching (PAEMST) will soon be accepted. This celebrated award, administered by the National Science Foundation for the White House, identifies outstanding mathematics and science teachers in grades K-12. Competition alternates each year between teachers of grades K-6 and teachers of grades 7-12. 2012 will be an elementary (grades K-6) cycle. Use the nomination link at [www.paemst.org](http://www.paemst.org) for more information. Individuals who are nominated will be notified by e-mail of their nomination; therefore, it is necessary that a working e-mail address be provided for each teacher nominated when the nomination is made. LATM members are encouraged to nominate outstanding elementary teachers of mathematics for this award. Teachers may self-nominate.

## 2011 PBS Teacher Innovation Awards

**Katrice Hall** from Jefferson Terrace in Baton Rouge and **Vickie Stewart** from Xavier University Preparatory school were named second place winners in the 2011 PBS Teachers Innovation Awards. These awards are given to recognize educator's creative and innovative use of public media to engage students and improve learning. Both entries were in the mathematics category. Katrice's entry at the 3-5 level was based on the PBS program *Chances Are: Probability Part 1* (<http://www.pbs.org/teachers/innovators/gallery/2011/entries/829/>) while Vickie's 9-12 entry, posted at (<http://www.pbs.org/teachers/innovators/gallery/2011/entries/827/>), used the PBS program *American Quilts*. The lessons of all the finalists and winners can be viewed at <http://www.pbs.org/teachers/innovators/gallery/2011>.

[Return to Table of Contents](#)

## Teacher Recognitions

### LATM Outstanding Teacher Finalists Announced

Each year LATM honors outstanding mathematics teachers across our state. This award recognizes teachers at the elementary, middle, and the secondary level who have shown tremendous dedication to students and a desire to continually grow as a professional. The LATM Board and the members of Outstanding Teacher Selection Committee were happy to have many excellent submissions.

The following professionals are our 2011 Outstanding Teacher Finalists in the categories shown:

#### Elementary School

Marquita Curry	Abramson Science and Technology Charter School, New Orleans
Leslie Arceneaux	Episcopal High School, Baton Rouge
Debbie Reynolds	Westdale Heights Academic Magnet, Baton Rouge

#### Middle School

Michelle Lakhotia	Judice Middle School, Lafayette
Mindy Guthrie	Evangel Christian Academy, Shreveport
Katherine Bergeron Aucoin	Napoleonville Middle School, Napoleonville

#### High School

Gretchen Hennessy	Metairie Park Country Day School, Metairie
Amanda Lee	Lafayette High School, Lafayette
Karen "Kay" Butler	Patrick F. Taylor Science & Technology Academy, Jefferson

Finalists will be recognized and award winners in each category will be announced on Thursday, October 20, 2011, at the LATM Awards Luncheon. Thanks to all the applicants and our finalists for professionalism and commitment to Louisiana's students.

## Student Recognitions

### Carol Meyer Memorial Scholarship Recipients

Each year LATM awards two \$500.00 scholarships in memory of an outstanding mathematics teacher. The Carol Meyer Memorial Scholarship award is given to two high school seniors who have expressed an interest in pursuing a career in mathematics, mathematics education, or elementary education.

LATM is pleased to announce that our Carol Meyer Scholarship recipients for 2011 are **Camille Delcambre** and **Colleen Robichaux**. Camille is a graduate of Erath High School in Lafayette Parish and is attending the University of Louisiana-Lafayette this fall. She is majoring in Education and plans to teach middle school math. Colleen is a graduate of Vandebilt Catholic High School in Houma and is attending LSU this fall. She is majoring in Secondary Education with a concentration in mathematics and plans to be a high school math teacher.

Applications for the 2012 Carol Meyer Memorial Scholarship will be posted this fall on the LATM website at <http://lamath.org/CarolMeyerScholarship.htm>.

[Return to Table of Contents](#)

# VICE-PRESIDENTS' CIRCLE

## Glyphs for Beginning Data Collection

Sabrina Smith  
Elementary Vice-President

The *Principles and Standards for School Mathematics* (NCTM 2000) envisions teachers as engaging students from a very young age in participating actively with data. This includes collecting, displaying and discussing data that is relevant to them. Students of all ages can have meaningful experiences in collecting data and constructing different types of graphs. One particular type of pictograph that helps to teach children to consult a legend and convey information is a *glyph*. A glyph is a pictorial form of data collection. One might be reminded of the term "hieroglyphics" and think about early picture writing. Different forms of glyphs are used in many medical situations to quickly record data about a patient in pictorial form. For example, a dentist records cavities on a picture of teeth. A chiropractor might record injuries or muscle aches on a skeletal picture. In these cases, a "picture is worth a thousand words" and the glyph allows a doctor to more quickly record and analyze the data.

Students in elementary school often create paper art projects for different seasons or holidays. It is easy to transform these traditional projects into mathematical glyphs that allow students to organize and analyze data over several visits.

Free glyph templates that can be used with students can be found at:

<http://www.mathwire.com/glyphs/glyphs.html>

<http://wvde.state.wv.us/strategybank/PersonalGlyphs.html>

## LEGO® Creations Lesson

Kay McInnis  
Middle School Vice-President

*Cooperative Carbon Copy LEGO® Creations* is a great lesson for any grade level that promotes problem solving skills and encourages students to work together. The purpose of this activity is to help develop the skills of cooperation, observation, communication, memory, accuracy, and description.

Before beginning the activity, the teacher creates a 3-dimensional figure using LEGOs®. Pop Cubes can be substituted if LEGOs® are not available. Each group of 4 students is given a bag containing an identical set of blocks. Each group has an Observer, a Builder, a Manager, and an Active Learner. The Observer has one minute to look at the teacher's structure and instructs the builder on how to build the structure. The Builder has two minutes to build the structure after the Observer's minute is up. The Builder may not talk and is the only one who may handle the blocks. The Manager makes sure the Builder is the only group member who touches the blocks and makes sure the Observer keeps his hands behind his back. The Active learner asks the Observer questions and tries to clarify the directions. When the three minutes are up, the role cards are passed in a clockwise direction and each member of the group takes on a new role. This continues until all members of the group have had the opportunity to function in each role.

See the complete lesson at NCTM's *Making Connections* website:

[http://mconn.doe.state.la.us/lessonplans.php?task=LP\\_view&lesson\\_id=13617&dispPage=5](http://mconn.doe.state.la.us/lessonplans.php?task=LP_view&lesson_id=13617&dispPage=5)

[Return to Table of Contents](#)



## Non-Standard Problem Solving Activities

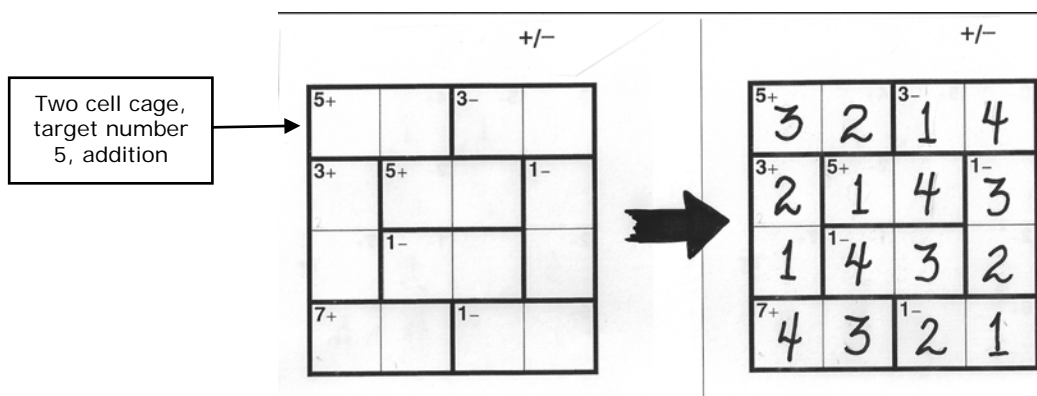
Jeffrey Weaver  
College Vice-President

As the school year begins, the prepared professional begins planning for the year in their classroom teaching. Not only should the plans satisfy the needs for the student's learning of the expected curriculum, but they should also include opportunities for non-standard problem solving activities to promote critical thinking and the development of mathematical thinking. One resource that is available is the use of KenKen puzzles.

*KenKen* or *KenDoku* is a style of arithmetic and logic puzzle invented in 2004 by the Japanese math teacher Tetsuya Miyamoto, an innovator who says he practices "the art of teaching without teaching." He intends the puzzles as an instruction-free method of training the brain. The names *Calcdoku* and *Mathdoku* are sometimes used by those who don't have the rights to use the KenKen or KenDoku trademarks. The name derives from the Japanese for cleverness.

As in sudoku, the goal of each puzzle is to fill a grid with digits — 1 through 4 for a 4×4 grid, 1 through 5 for a 5×5, etc., so that no digit appears more than once in any row or column. Grids range in size from 3×3 to 9×9. Additionally, *KenKen* grids are divided into heavily outlined groups of cells — often called "cages" — and the numbers in the cells of each cage must produce a certain "target" number when combined using a specified mathematical operation (either addition, subtraction, multiplication or division). The target number and operation appear in the upper left hand corner of each cage.

For example, a three-cell cage specifying addition and a target number of 6 in a 4×4 puzzle might be satisfied with the digits 1, 2, and 3. Digits may be repeated within a cage, as long as they are not in the same row or column. No operation is relevant for a single-cell cage: placing the "target" in the cell is the only possibility. An example of a *KenKen* puzzle and its solution is provided.



A puzzle can be used as a warm-up activity, a weekly challenge, or used for students that complete their work early and need an additional challenge. The added value of using such activities is to promote thinking and create a greater sense of numbers and their operations by providing additional practice in mental calculations. These puzzles can be found online or purchased in puzzle books and can be reproduced for use in the classroom. Elementary, middle, and high school students can benefit from these puzzles and they can be used at any point in the school year.

[Return to Table of Contents](#)



# Teacher Made Assessments What Else Can We Do?

Penny Gennuso  
High School Vice-President

Teachers are constantly looking for ways to address continuing improvement in student achievement. A concentration on teacher-made assessments is a good place to start.

One school in Virginia took on this task by creating a table of specifications for tests that were already being used by their teachers. Using this table, teachers met in grade-level groups to list the content of their curriculum on the vertical axis and the cognitive levels at which the learning objectives are intended to be mastered on the horizontal axis. The cognitive requirement of the assessment for each learning objective was also recorded. The conclusion was that most teacher-made tests were targeting cognitive ability at the knowledge level rather than matching the cognitive level required by the learning objective.

Teachers who began using the table of test specifications saw a marked improvement in tests that matched the requirements of the learning objective as well as increased use of classroom activities that brought about student achievement at higher levels. Below is an example of a table of test specifications, which could be used to begin to analyze a teacher-made test for Unit 1 in the Grade 8 *Comprehensive Curriculum*.

**Table of Test Specifications**

8 <sup>th</sup> Grade – Unit 1  Content	Knowledge		Comprehension		Application		Synthesis		Evaluation	
	GLE	Test	GLE	Test	GLE	Test	GLE	Test	GLE	Test
GLE 1: Compare rational numbers using symbols and position on a number line (N-1-M) (N-2-M)										
GLE 3: Estimate the answer to an operation involving rational numbers based on the original numbers (N-2-M) (N-6-M)										
GLE 5: Simplify expressions involving operations on integers, grouping symbols, and whole number exponents using order of operations (N-4-M)										
GLE 36: Organize and display data using circle graphs (N-5-M)										
GLE 6: Identify missing information or suggest a strategy for solving a real-life rational number problem (D-1-M)										

Holler, Edward, Gareis, Christopher, Martin, Julie, Clouser, Ashley, Miller, Steve, (2008).  
*Teacher-made Assessments, Getting them Right*. Principal Leadership, 60(9).  
Sandra Lebouef, Lafayette Parish Middle School Math Lead Teacher

[Return to Table of Contents](#)

## AFFILIATE NEWS

### Acadiana Council of Teachers of Mathematics (ACTM)

ACTM sponsored a three-day Math Teachers' Circle in June. We were delighted to have some new faces with participants requesting that the program expand to 5 days next summer. Several members of ACTM traveled to Shreveport and helped with their Math Teachers' Circle in July. They had a very large and very eager group of teachers. We feel we all have become better problem solvers as a result of these retreats.

ACTM will continue to meet once a month on Thursday evening on the University of Louisiana-Lafayette campus in Room 202 of Maximum Doucet. Our first meeting will be September 29<sup>th</sup>. Anyone interested in being put on the mailing list for this meeting and other upcoming events should send his/her name and e-mail address to [cmckay7930@earthlink.net](mailto:cmckay7930@earthlink.net).

Lafayette was privileged to have a three-week MSP project with 36 teachers involved. Three instructors from the university and a wonderful master teacher who had lots of science labs for the teachers to use in their classrooms kept the teachers enthusiastic and actively engaged.

### Baton Rouge Area Council of Teachers of Mathematics (BRACTM)

BRACTM's focus this year will be on the Common Core State Standards. We will have a "Common Core Corner" in our newsletter. There will be three meetings during the year in which participants will break into small groups to learn more about curriculum changes and to get feedback from other teachers in our grade levels. Meeting dates are September 22<sup>nd</sup>, November 10<sup>th</sup>, and April 26<sup>th</sup>.

Meetings will be held in Pope Hall of St. Luke's Church in Baton Rouge. The address is 8833 Goodwood Boulevard. Refreshments are to be served from 5-5:30 with the meeting to be held from 5:30-6:30 p.m.

This year's BRACTM mini-conference will be a joint conference with the Capital Area Reading Council and the Zachary Area Reading Council. The theme will be *Louisiana: What's Cookin' in Our Classrooms?* The conference date is tentatively set as January 28<sup>th</sup>.

Please contact Shannon Hannaman at [shannama@lsu.edu](mailto:shannama@lsu.edu) for further information.



**Shannon Hannaman** is president of the Baton Rouge Area Council of Teachers of Mathematics (BRACTM) and has served on the LATM Executive Council for the past six months. She has been teaching for the past 16 years and currently teaches kindergarten at the University Laboratory School in Baton Rouge. In addition, she is the youth director at St. Luke's church in Baton Rouge and has been married to Jay Hannaman for 19 years.



[Return to Table of Contents](#)

---

## Greater New Orleans Teachers of Mathematics (GNOTM)

GNOTM hosted a Teacher Recognition Reception last May. Teachers of mathematics as well as QSM winners were honored and presented with a certificate and a gift. GNOTM was honored that Paige Falcon, the 2010 Presidential Awardee in mathematics from Louisiana, was present.

GNOTM held its annual Board retreat in July. The Board voted to send our new President, Jennifer Campbell, to the NCTM Leadership Conference in Denver. Jennifer had a great time and came back with lots of new ideas. New board members include Lisa Sullivan, VP of Colleges, and Amy Liberta, Membership chair.



**Sabrina Smith** currently serves on the LATM Executive Council as the Vice President for Elementary Schools. As the K-5 Mathematics Consultant for the Jefferson Parish Public School System, her major responsibilities include overseeing curriculum, assessment and professional development. In addition to her activities for LATM, Sabrina is the President of the Louisiana Council of Supervisors of Mathematics (LCSM) and serves on the Executive Board of the Greater New Orleans Teachers of Mathematics (GNOTM). In October 2009, Sabrina was a program committee member for the NCTM Regional in Nashville and worked as the Local Arrangements Co-chair for the NCTM Regional held in New Orleans in October 2010.



---

## Northeast Louisiana Association of Teachers of Mathematics (NELATM)

NELATM officers met on May 10, 2011 to plan for the 2011-2012 year. For a list of current officers visit our webpage, [www.nelatm.org](http://www.nelatm.org). The schedule of events for the coming school year is provided below.

FALL MEETING: Friday, October 20, 2011

The LATM Annual Conference is scheduled for October 19-21, 2011. Because many of our members will be attending the LATM conference, the fall NELATM meeting has been scheduled for Friday, October 20<sup>th</sup>, at the Monroe Civic Center during the last session of the day.

WINTER MEETING: Saturday, March 10, 2012

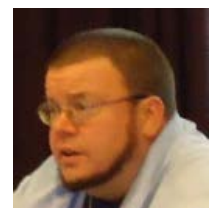
There will be a business meeting at the conclusion of our annual Mini-Conference. This year's guest presenter for the mini-conference will be Greg Tang.

SPRING MEETING: Tuesday, May 1, 2012

This meeting will be the last for the year. The location for the meeting will be announced at a later date. Newly-elected board members assume their new roles at this meeting.



**Jeffrey Weaver** has been a mathematics teacher for 25 years and on the LATM Executive Council for three years, previously serving as Parliamentarian and now as Vice-President of Colleges. He has taught at middle, high, and university levels and is currently teaching at Baton Rouge Community College. He is an active member of NCTM and LaMSMATYC and has presented at more than 60 professional conferences over his career. In his spare time, he is a cartoonist. Check out his self-portrait on his Vice-President's article.



[Return to Table of Contents](#)

---

## Northwest Louisiana Mathematics Association (NLMA)

During the winter conference on March 5, 2011, the following slate of officers was elected for 2011 – 2013:

Marilyn Bartlett-Jackson – President  
Melinda Cassel – Treasurer  
Secretary – Cathy Jiles  
NCTM Representative – Tonya Evans  
Liaison to Districts in Region 7 – Jacob Hesselschwardt  
Community Relations – Jean Ware

This summer, thirty-three 5<sup>th</sup> grade teachers in Caddo Parish participated in a two week math MSP project entitled Project T.A.M.E. (Targeting Academic Mathematical Excellence) at Centenary College. Dr. David Thomas and Roger Vance were the instructors for this 8:30 – 3:30 mathematics institute.

In addition, Project T.A.M.E. teachers attended a three-day training presented by Laureen Stephens, Jan Graff, and Tonya Evans that focused on the effective use of the *Louisiana Comprehensive Curriculum*. Caddo Parish 8<sup>th</sup> grade teachers also attended a separate but similar three-day training on the 8<sup>th</sup> grade curriculum. During these professional development opportunities, 5<sup>th</sup> and 8<sup>th</sup> grade teachers focused on the LCC and the LDE resources that can be used to support the curriculum (Assessment Guides, Access Guide, EAGLE, etc.). Two days were spend engaging in the activities in Units 1 and 2, modeling and discussing ways to meet the needs of students through the activities in each unit. Additional training on the remaining six units in each of the *Comprehensive Curriculum* courses will be provided during the school year. (See related article in the Louisiana Department of Education article.)



### ***Comprehensive Curriculum Workshops for Caddo Teachers***

*Left: Project TAME participants use Base 10 Blocks as part of a modeled activity.*

*Right: Teachers work collaboratively to identify important Grade 8 content.*



---

## Louisiana Council of Supervisors of Mathematics (LCSM)

LCSM will meet on Wednesday, October 19, 2011, at 1:00 p. m. at the Monroe Civic Center on the opening day of the LATM conference. An agenda will be disseminated via e-mail prior to the meeting. Any mathematics coordinator, coach, supervisor, or other educators who provide math leadership should consider joining LCSM and make plans to attend. To join our mailing list or receive membership information, please send contact information to Stacey McGee, Secretary, at [stacey.magee@stpsb.org](mailto:stacey.magee@stpsb.org), or Sabrina Smith, President, at [sabrina.smith@jppss.k12.la.us](mailto:sabrina.smith@jppss.k12.la.us).



*LCSM members study the Common Core State Standards for Mathematics at their May 2011 meeting.*

---

## SouthEast Area Teachers of Mathematics (SEATM)

SEATM plans to offer several travel grants for the annual LATM conference. The board will be meeting soon to finalize the process. SEATM is excited about a new school year. We are looking forward to hosting both a Fall and Spring teacher professional development activity for our members. Visit our website at <http://www.seatm.org>.

---

## Southwest Louisiana Teachers of Mathematics (SWLTM)

The Southwest Louisiana Teachers of Mathematics held its annual spring mini-conference February 19, 2011, at Lake Charles Boston Academy in Lake Charles, LA. At this event SWLTM excitedly announced the following teachers as winners of the first SWLTM mini-grant awards. They are **Catina Ceasar** (LeBleu Settlement), **Katie Ryder** (LeBleu Settlement), **Cottie Mouton** (Dolby Elementary), **Shiv Kumar** (LaGrange High School), **Mica Reinsch** (J. I. Watson), **Laura Phenice** (R. W. Vincent), **Trudy Phelps** (Dolby Elementary), and **Wayne Smith** (A. A. Nelson). Congratulations to the winners, who are pictured below. You, too, can become a mini-grant awardee for the year 2011-2012. Come to SWLTM membership meeting on September 10, 2011, in Frasch Auditorium Room 130 at McNeese State University at 10 a.m. to find out how to submit for a SWLTM mini-grant. Also plan to attend SWLTM spring mini-conference in February 2012 where the current awardees will be presenting their reports. Look for the dates soon and start planning your presentation now.



---

## 2011 NCTM Affiliate Leaders Conference

---

The 2011 NCTM Affiliate Leaders Conference was held in Denver, Colorado, on July 29-31, 2011. The conference theme was "Leadership: Constructing and Transforming Perspectives." The agenda was designed to strengthen an Affiliate's leadership by constructing understanding to transform Affiliate effectiveness on many levels.

This conference was a working conference at which participants work in small groups then share insights with everyone present. Attending from the Louisiana affiliates this year were **Pamela Martin** (LATM), **Jennifer Campbell** (GNOTM) and **Kathie Smart** (NELATM).

*Pamela Martin, Jennifer Campbell, and Kathie Smart with NCTM President, Michael Shaughnessy, at the 2011 NCTM Affiliate Leaders Conference*



[Return to Table of Contents](#)

# LATM JOURNAL

## Share Your Teaching Knowledge in the LATM Journal

Have you taught a great mathematics lesson that has worked over and over? Have you used new software in your mathematics classroom that has benefited your students greatly? Have your students completed a project that could be replicated in other classrooms? Have you conducted professional development that had teachers excited about going back to the classroom? Share your knowledge! Write an article about your experience!



Or, maybe you would like to write a guest column. Past guest columnists have included Dr. James Madden, Co-Director of the LSU Gordon A. Cain Center, and Dr. Guillermo Ferreyra, Chief STEM Officer of Louisiana. Check out the most recent LATM Journal and previous issues at <http://lamath.org/journal/index.htm>.

### LATM JOURNAL

Approximate deadline for submission is October 1 of each year. The anticipated date for publication of the *LATM Journal* is February of each year. Submission information can be found at <http://lamath.org/journal/LATMJournalSubmissionInformation.pdf>. If you have any questions or suggestions, the *LATM Journal* contact editor is Dr. DesLey V. Plaisance ([desley.plaisance@nicholls.edu](mailto:desley.plaisance@nicholls.edu)).

## Election of Officers and Appointments

The LATM Nominating Committee has submitted the following nominations for election of officers:

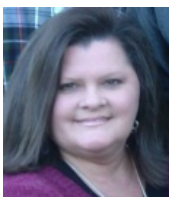
- President Elect: Jeffrey Weaver
- Secretary: Stacey Magee
- Vice-President of High Schools: Penny Gennuso
- Vice-President of Middle Schools: Jacob Hesselschwardt
- Parliamentarian: Maryanne Smith

If you have additional nominations for these positions, please e-mail them to Pam Martin at [pmartin@ulm.edu](mailto:pmartin@ulm.edu) no later than September 15, 2011, so that a ballot can be prepared for voting at the annual business meeting which is held during the LATM Annual Conference.

At the June 2011 LATM board meeting, Lon Smith was appointed as the LATM website editor.



Weaver



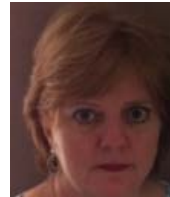
Magee



Gennuso



Hesselschwardt



M. Smith



L. Smith

[Return to Table of Contents](#)

# Mathematical Puzzles

Jacob Hesselschwardt

Math puzzles are a fun and educational means of getting students involved in mathematics. Mathematical puzzles range in complexity from relatively easy problems to problems that yet require a solution. The whole history of mathematics is interwoven with puzzles of various forms: number games, geometrical puzzles, network puzzles, combinatorial puzzles, etc.

One of the oldest known math puzzles was recorded on the Rhind Papyrus by the ancient Egyptian civilization in 1850 B.C. The problem follows:

"Seven houses contain seven cats. Each cat kills seven mice. Each mouse had eaten seven ears of grain. Each ear of grain would have produced seven hekats of wheat. What is the total of all of these?"

Additional information regarding the Rhind Papyrus and the above problem may be found at: [http://www.daviddarling.info/encyclopedia/R/Rhind\\_papyrus.html](http://www.daviddarling.info/encyclopedia/R/Rhind_papyrus.html).



**Jacob Hesselschwardt** is the current LATM Parliamentarian. Jacob has been teaching for eight years and is currently the 8th grade Math Discovery teacher at Cope Middle School in Bossier Parish. Jacob is, also, an online instructor for Louisiana Virtual School (LVS) and has served as an online facilitator for TALI and Algebra I. Additionally, Jacob is the Region VII Liaison for the Northwest Louisiana Teachers of Mathematics (NLTM), an active grant writer, a regular presenter at LATM and LSTA conferences, and a member of the Northwest Louisiana Math Circle group. Jacob; however, is most proud of his accomplishments as a husband and father. Jacob is married to his high school sweetheart Annette and is the father to four year old daughter Mya.



## North Louisiana Math Teachers' Circle

Middle school math teachers from several northwest Louisiana parishes met July 18-22 at LSU Shreveport to work math problems for the fun of it. The group North Louisiana Math Teachers' Circle hopes that the pleasure and satisfaction that teachers feel when solving math problems will trickle down to students. The NLMTC is a group of college faculty and middle school mathematics teachers and administrators whose mission is to establish the foundation for a culture of problem solving by fostering the enjoyment of mathematics among middle school math teachers. Its goal is to help today's teachers and students become flexible, creative, and collaborative problem solvers. LSU Shreveport math professor Judith Covington says it's important to recognize that math is creative and not just rote memorization. The group is part of a national organization. <http://www.mathteacherscircle.org/>.

The four day summer workshop, made possible through grant funding, allowed teachers and mathematicians to form a collaborative network. The sessions actively involved teachers in solving problems and discussing middle school pedagogy. There are six follow-up meetings planned that will center on a rich problem or group of problems and will include dinner and pedagogical discussions.

[Return to Table of Contents](#)

# NCTM Update



This fall NCTM's Regional Conferences and Expositions are traveling to [St. Louis](#), [Atlantic City](#), and [Albuquerque](#) to bring you top-quality professional development. Not only will you hear from experts on hot topics like technology and Common Core Standards, but registration is affordable. For as low as \$128, you will enjoy two full days of workshops and sessions; explore an exhibit hall jam-packed with the latest resources in math education; participate in hands-on activities; and return home with free resources and activities for your classroom. Registration is open now:

[Atlantic City, New Jersey • October 19-21](#)

[St. Louis, Missouri • October 26-28](#)

[Albuquerque, New Mexico • November 2-4](#)

## **New Position Statements: Intervention and Calculator Use in Elementary Grades**

The NCTM Board of Directors approved two new position statements at its July meeting. The NCTM Position on [Intervention](#) lays out the roles of intervention in mathematics teaching in supporting individual students in meeting grade-level goals. The NCTM Position on [Calculator Use in Elementary Grades](#) emphasizes the important role that calculators play in the elementary grades in supporting and advancing mathematics learning. Visit the website, [www.nctm.org](http://www.nctm.org) and click on the link "About NCTM" and then "position statements" to read their positions.

## **Report of the NCTM Board of Directors July Meeting**

The NCTM Board of Directors met July 22–23 in Stevenson, Washington. At its meeting, the Board took the following actions:

- Approved new NCTM position statements on calculator use in elementary grades and intervention.
- Passed a motion to appoint a task force charged to explore the feasibility of producing units or modules of teacher and student curriculum materials and to submit a white paper with a recommendation for Board consideration.
- Passed a motion to revise the qualifications for elementary teachers to serve on the NCTM Board of Directors.
- Approved reinstating Affiliate outreach Learn-Reflect professional development strands at three NCTM Affiliate conferences each year through fiscal year 2015.
- Approved "Number & Operations: Be Radical and Get Real" as the 2013–14 NCTM professional development focus of the year.
- Passed a motion to appoint a task force to work with the new [Museum of Mathematics](#) to develop a plan for initiating and implementing a public image campaign for mathematics.

## **NCTM Membership**

If you are not already enjoying the many benefits of NCTM membership, we invite you to learn what membership offers you and encourage you to join today! **Be sure to choose LATM as your affiliated group so that we get credit.**

<http://www.nctm.org/membership/default.aspx?id=56>

[Return to Table of Contents](#)



# OPPORTUNITIES FOR TEACHERS

## Great Opportunity for K-12 Public School Math and Science Teachers!

**Deadline September 16, 2011**

Looking for a way to purchase math and science classroom materials? Are you in need of funding to support equipment for your great ideas? Wish you could implement some ideas seen during last year's conferences or professional development training? The answer might be waiting for you through the Quality Math and Science Grant Program.

The Quality Science & Mathematics Grant Program (QSM) was established by R.S. 17:371-1 of the Louisiana Legislature in the summer of 1992 for the purpose of providing grants to mathematics and science public school teachers for the purchase of materials and equipment. The QSM program administered by the Gordon Cain STEM Center at LSU (<http://www.cain.lsu.edu>) has approximately \$162,000 in funds to award grants to eligible classroom teachers for the 2011-12 school year. Grants of up to \$750 each for approved materials and equipment are awarded on a competitive basis to individual classroom teachers to use in providing standards-based instruction to help meet state accountability goals. Applicants must show that their proposals will enhance the quality of instruction for regular education students who are enrolled in mathematics or science classes. Proposal must be submitted no later than Friday, September 16, 2011.

**\*\*NOTE:** Only full-time classroom teachers assigned to teach mathematics or science in the K-12 regular education program in public schools are eligible to submit proposals. Go to <http://www.seasystem.net/cgi-bin/qsm/> for the full guidelines and regulations.

### Sixth Grade Teachers Needed for Pilot Study

In collaboration with Marilyn Burns, Math Solutions of Sausalito, CA, is conducting a study that explores incoming middle school students' numerical reasoning strategies in the area of number and operations. As part of the study, funded by the Bill and Melinda Gates Foundation, Math Solutions has developed a web-based formative assessment tool. The tool will allow teachers to interview students individually and enter computation data from student work. The assessment addresses whole numbers, fractions, and decimals and is consistent with the concepts, knowledge, and skills outlined in the Common Core State Standards.

If you meet the following criteria, Math Solutions invites you to submit an e-mail with your contact information to Jesus Martinez at [jmartinez@mathsolutions.com](mailto:jmartinez@mathsolutions.com).

- Ability to assess at least 5 sixth-grade students
- Available to participate either in two Saturday face-to-face sessions between September and October or two online trainings between late August and mid October
- Interview students within the September 19th—October 14th time frame
- Interact with project staff as necessary to coordinate training, access online tool, etc.

[Return to Table of Contents](#)



## 2012 Joint Math and Science Conference



The LATM and LSTA Executive Councils have agreed to hold their fifth joint conference. Based on the outstanding success and fabulous evaluations of the 2006 and 2009 joint conferences the 2012 event will again be held in Shreveport, November 5 - 7, 2012. The conference will return to a Monday through Wednesday program. This arrangement allows the participants to take advantage of reduced hotel rates and keeps Fridays open for teachers, particularly those at the high school level who have duty assignments for school sporting events and programs.

### T3 Regional Conference – Denton, TX

Saturday, September 24, 2011

8:00 a.m. – 5:00 p.m.

T<sup>3</sup> Regional Conferences are open to all middle grades to university educators interested in using educational technology to enhance the teaching and learning in Mathematics and Science. Attendees can count on networking with teachers from across the region; learning from experienced educators; and participating in hands-on and demonstration sessions for new and experienced educators. You'll receive lots of great classroom activities and ideas, along with the latest news on TI technology. Registration Fees are \$50 and \$10 for pre-service prior to September 3. After September 3, \$60 and \$10 for pre-service. Location: Texas Woman's University – Denton Campus, MCL Building, Grove and Bell Avenue, Denton TX 76204. Contact: Dr. Cathy Banks at [cbanks@twu.edu](mailto:cbanks@twu.edu) or 940-898-2770.

## TEACHERS' TECHNOLOGY CORNER

Many schools have started to invest in iPads, iPhones, and iTouches. The focus of this edition of the Teachers' Technology Corner is two Apps that have recently become available and have good reviews based on their educational use. Both Apps are available through iTunes.

### **Kakooma Math Puzzles –iPad, iPhone, and iTouch \$0.99 App**

Looking for a good way to motivate students to learn their math facts? Go to <http://www.kakooma.com/> and click on *Test Drive* to watch videos of how the game works. The App currently focuses on addition facts, but has several difficulty levels, including integers. There is an online version for a yearly subscription price of \$29 that provides practice in all operations. There are also printed versions of the puzzles that are \$8.95 each and a blackline master version. The puzzles were created by Greg Tang, noted author of books such as *Grapes of Math*, *Math For All Seasons*, *Best of Times*, *Math Appeal*, *Math-terpieces* and *Math Fables*

### **Geometer's Sketchpad Explorer Free App for iPads**

Based on the award-winning software *The Geometer's Sketchpad*®, the Sketchpad Explorer app allows you to interact with, and investigate, *any* mathematical document created in Sketchpad. Sketchpad Explorer includes iPad®-specific activities and workbooks for elementary mathematics (Grades 1-6), early Algebra (Grades 7-9), and Geometry (Grades 9-10), as well as full access to many mathematical documents hosted on the Sketch Exchange community site and across the web. Users of The Geometer's Sketchpad can also create and share documents with and for their iPad using iTunes® File Sharing. For more information, visit [http://www.dynamicgeometry.com/General\\_Resources/Sketchpad\\_Explorer\\_for\\_iPad.html](http://www.dynamicgeometry.com/General_Resources/Sketchpad_Explorer_for_iPad.html).

[Return to Table of Contents](#)

# LA DEPARTMENT OF EDUCATION UPDATE

## Implementation Plan for Common Core State Standards

On May 20, 2011, Department staff presented Louisiana’s Common Core State Standards (CCSS) Implementation Plan via a webinar to district level staff with the intent that the information be redelivered to all educators and stakeholders. This article provides a summary of the timeline. Links to the webinar video and the accompanying PowerPoint are posted at [http://www.louisianaschools.net/topics/common\\_core\\_training.html](http://www.louisianaschools.net/topics/common_core_training.html) and provide background information on the CCSS, a brief overview how instruction with the GLEs compares to that when using the CCSS, the timeline, and a summary of upcoming events.

The table below provides an overview of the implementation plan as it applies to curriculum and assessments for ELA and mathematics. The colors blue, green, and gold used in the table are used to indicate Current, Transitional, and New, respectively, and are explained in the legend.

ELA and Mathematics – Curriculum and Assessment

		2011-12	2012-13	2013-14	2014-15
	<b>No changes:</b> current curriculum and assessments based on GLEs	<i>Current</i>	<i>Current</i>	<i>New</i>	<i>New</i>
	<b>Curriculum: some GLEs deleted; some GLEs remain; some CCSS added</b> <b>Assessments: based on GLEs that <u>remain</u> in curriculum</b>	<i>Current</i>	<i>New</i>	<i>New</i>	<i>New</i>
	Curriculum and assessments <b>based solely on CCSS.</b> GLEs no longer exist in mathematics and ELA	<i>Current</i>	<i>Transitional</i>	<i>Transitional</i>	<i>New</i>
	<i>PreK</i>	<i>Current</i>	<i>Current</i>	<i>New</i>	<i>New</i>
	<i>K</i>	<i>Current</i>	<i>New</i>	<i>New</i>	<i>New</i>
	<i>Grade 1</i>	<i>Current</i>	<i>New</i>	<i>New</i>	<i>New</i>
	<i>Grade 2</i>	<i>Current</i>	<i>Transitional</i>	<i>New</i>	<i>New</i>
	<i>Grades 3-8</i>	<i>Current</i>	<i>Transitional</i>	<i>Transitional</i>	<i>New</i>
	<i>High School</i>	<i>Current</i>	<i>Transitional</i>	<i>Transitional</i>	<i>New</i>

Note the following:

- There are no changes being made to the curriculum or assessments in the current school year (2011-12). The curriculum and the assessments are based on current GLEs.
- PreKindergarten will use the current curriculum through the 2012-13 school year.
- Kindergarten and Grade 1 will implement the CCSS in 2012-13.
- Grade 2 will have a one-year transitional period.
- Grades 3 and higher have a two-year transitional period. During this time, students will take Transitional assessments as describe in the legend above.
- All grades will fully implement the CCSS in 2014-15 and all assessments will be based on the CCSS.

### Year-by-Year Timeline

#### 2011-12

- 1) Crosswalk documents have been created for each grade to indicate the new CCSS that will be added during each year of the transition, what content will remain the same (where the GLEs and the CCSS “match”), and what GLEs will be deleted because their content does not match a CCSS.

- 2) Writers will create Transitional curricula using the information in the crosswalk documents (see #1 above) for grades 2 and higher. Activities aligned to deleted GLEs will be deleted, new activities will be written for new CCSS, etc.
- 3) Writers will create New curricula based on CCSS for Kindergarten and Grade 1.

### 2012-13

- 1) Kindergarten and Grade 1 will implement their New curricula based on CCSS.
- 2) Grades 2 and higher will implement their Transitional curricula. Grades 3-8 and courses that have End-of-Course assessments will take Transitional assessments. Only content for GLEs that remain in the curriculum will be assessed. New CCSS will not be assessed.
- 3) Writers will create New curricula based on CCSS for PreKindergarten and Grades 3 and higher.

### 2013-14

- 1) PreKindergarten and Grade 2 will implement their New curricula based on CCSS.
- 2) Grades 3 and higher will continue use of their Transitional curricula and take Transitional assessments.

### 2014-15

- 1) All grades will be using New curricula based on CCSS.
- 2) All assessments will be based on CCSS.
- 3) GLEs in mathematics and ELA will no longer exist.

## Professional Development on Mathematics Comprehensive Curriculum for Grades 5 and 8



This year there was a new format for 5<sup>th</sup> and 8<sup>th</sup> grade MSP math projects. Teachers in these projects completed a 10-day summer content institute and then began 9 days of professional development aligned to the corresponding *Louisiana Comprehensive Curriculum* math course. The model for the 9 days of professional development will be used for training teachers on the use of the new CCSS-based *Louisiana Comprehensive Curriculum* once the courses are developed. The development and delivery of the 9 days of professional development was a joint endeavor between the Math Science Partnership program and the LDE Division of Curriculum Standards.

Each of the funded projects had a district redelivery team that came to Baton Rouge in June for a three-day training. The first day of training was an overview/introduction of the curriculum and the accompanying LDE resources (assessment guide, EAGLE, LEAP data system, literacy strategies, GLEs, etc.). On days two and three, the redelivery team closely examined the activities of Units 1 and 2, participated as “students” as lessons were modeled, and learned how to effectively integrate the resources to improve student learning. For each activity, there was a focus on connecting content, instruction and assessment. The district teams have redelivered the first three days of trainings to teachers in their projects and will return for three, two-day trainings during the current school year which will also be redelivered to teachers.

Following the announcement of the math *Louisiana Comprehensive Curriculum* course-specific professional development, several systems requested permission to participate and sent district teams to the training. Teachers in these districts have also completed the initial three-day workshops.

The responses of trainers and teachers have been overwhelmingly positive. The Department of Education looks forward to providing such training once the new curriculum aligned to the CCSS is developed.

[Return to Table of Contents](#)

# LATM EXECUTIVE COUNCIL

<b>Beth Smith</b> President <a href="mailto:bethsmith1124@gmail.com">bethsmith1124@gmail.com</a>	<b>Maryanne Smith</b> Past President <a href="mailto:smith70471@yahoo.com">smith70471@yahoo.com</a>	<b>Nell McAnelly</b> Treasurer <a href="mailto:mcanelly@math.lsu.edu">mcanelly@math.lsu.edu</a>
<b>Jeffrey Weaver</b> VP Colleges <a href="mailto:Jtweaver81@hotmail.com">Jtweaver81@hotmail.com</a>	<b>Penny Gennuso</b> VP High Schools <a href="mailto:mscromath@aol.com">mscromath@aol.com</a>	<b>Kay McInnis</b> VP Middle Schools <a href="mailto:katlyn5mac@yahoo.com">katlyn5mac@yahoo.com</a>
<b>Sabrina Smith</b> VP Elementary Schools <a href="mailto:sabsmith@cox.net">sabsmith@cox.net</a>	<b>Stacey Magee</b> Secretary <a href="mailto:stacey.magee@stpsb.org">stacey.magee@stpsb.org</a>	<b>Jacob Hesselschwardt</b> Parliamentarian <a href="mailto:jacobhessel@yahoo.com">jacobhessel@yahoo.com</a>
<b>Vicky Hand</b> Membership Chair <a href="mailto:vicky.hand@cpsb.org">vicky.hand@cpsb.org</a>	<b>Ellen Daugherty</b> NCTM Representative <a href="mailto:edaugh1@lsu.edu">edaugh1@lsu.edu</a>	<b>Vacant</b> LDE Representative
<b>DesLey Plaisance</b> LATM Journal Coordinator <a href="mailto:desvp@aol.com">desvp@aol.com</a>	<b>Carolyn Sessions</b> Newsletter Editor <a href="mailto:carolyn.sessions@la.gov">carolyn.sessions@la.gov</a>	<b>Jean May-Brett</b> Presidential Awards Coordinator <a href="mailto:jean.may-brett@la.gov">jean.may-brett@la.gov</a>
<b>Lon Smith</b> Web Site Editor <a href="mailto:proflon5@gmail.com">proflon5@gmail.com</a>	<b>Cat McKay</b> ACTM Representative <a href="mailto:cmckay7930@earthlink.com">cmckay7930@earthlink.com</a>	<b>Shannon Hannaman</b> BRAC TM Representative <a href="mailto:shannama@lsu.edu">shannama@lsu.edu</a>
<b>Joan Albrecht</b> GNOTM Representative <a href="mailto:joan.albrecht@jppss.k12.la.us">joan.albrecht@jppss.k12.la.us</a>	<b>Emily Rash</b> LCSM Representative <a href="mailto:erash@comcast.net">erash@comcast.net</a>	<b>Pam Martin</b> NELATM Representative <a href="mailto:pmartin@ulm.edu">pmartin@ulm.edu</a>
<b>Tonya Evans</b> NLMA Representative <a href="mailto:tevans@caddo.k12.la.us">tevans@caddo.k12.la.us</a>	<b>Ellen Marino</b> SEATM Representative <a href="mailto:ellen.marino@stpsb.org">ellen.marino@stpsb.org</a>	<b>Kay Kussman</b> SWLTM Representative <a href="mailto:kkussman@mail.mcneese.edu">kkussman@mail.mcneese.edu</a>

## Renew your Membership

Are you unable to attend the state conference? You can still renew your membership by visiting <http://lamath.org/membership/>. Submit the renewal information, print the renewal receipt, and mail the renewal receipt and \$15 payment to the address specified on the receipt.

[Return to Table of Contents](#)